



Streamline Projects with Location Intelligence

ACCELERATE PROJECT DEVELOPMENT

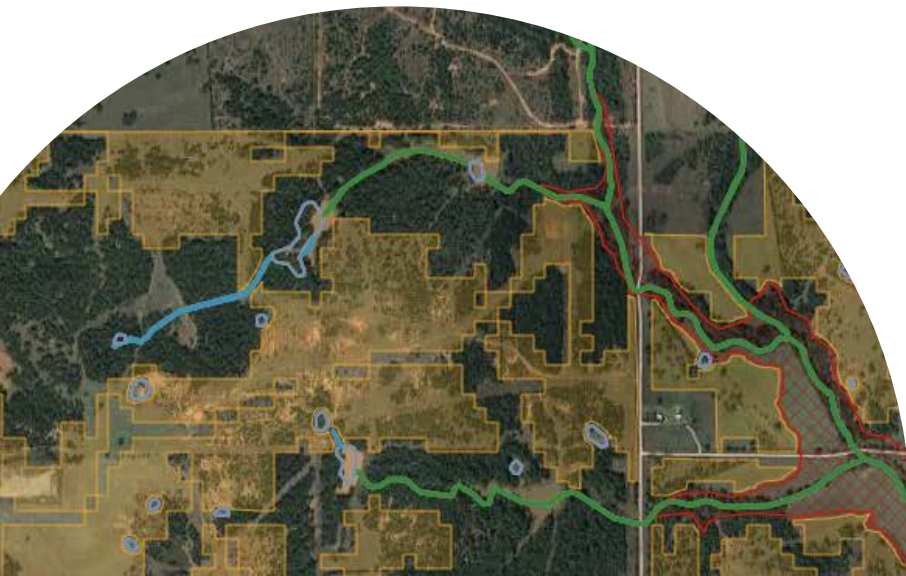
- Quickly evaluate land obstacles and environmental constraints anywhere in the U.S.
- Evaluate land use, jurisdiction, hydrological and geotechnical data in a simple map.
- Identify existing infrastructure to support greenfield development.
- Create cost surfaces to understand site suitability in an easy-to-use web map.

REDUCE INVESTMENT RISK

- Conduct due diligence to evaluate investments.
- Quickly identify endangered species, protected areas, and wetlands to avoid permitting delays.
- Evaluate property parcels and land ownership to avoid land owner conflicts and expedite acquisition.
- Access social vulnerability and political boundary data to reduce social and political risks.

SAVE TIME & MONEY

- Save months of manual data collection and analysis.
- Reduce time in field and permitting delays.
- Improve cost estimation with detailed crossing reports.
- Save up to 50% on routing and siting projects.



INDUSTRIES



POWER TRANSMISSION



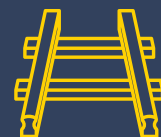
RENEWABLE GENERATION



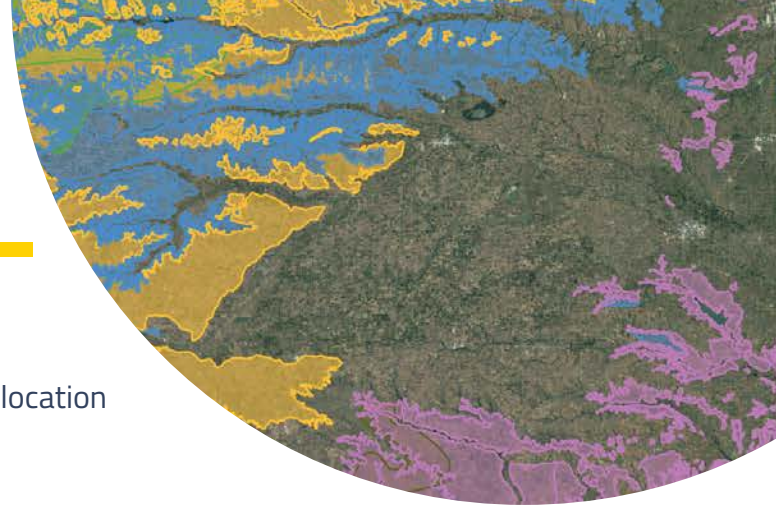
OIL & GAS PIPELINE



ENGINEERING



RAILROAD



PIVVOT PLATFORM

Streamline siting, suitability analysis and permitting with location intelligence and reduce project schedules by over 50%.

DATA VISUALIZATION

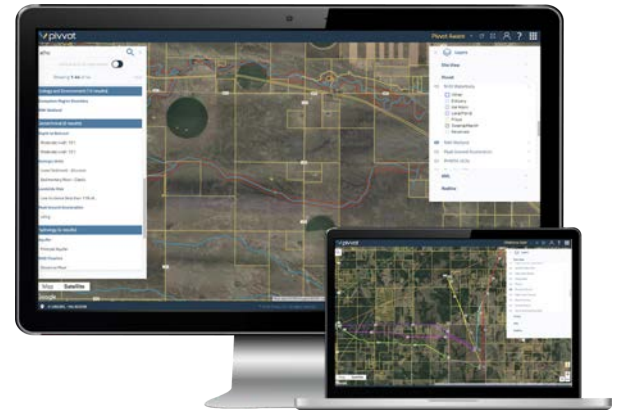
- Upload asset or third-party data to view and area of interest.
- Extend our database with your subject matter expertise.
- Turn on and off data layers for any location across the United States.
- Download Pivvot data for an area of interest to use in any system.
- Collaborate with your team, customers and third-parties on a simple, fast and familiar map.

ANALYSIS SOLUTIONS

- **Siting Analysis:** Speed up real estate development projects and get to market faster.
- **Project Area Analysis:** Drop a location, draw a polygon or a route and gain a detailed understanding of your surroundings.
- **Routing Analysis:** Generate point-to-point preferred routes utilizing our data, platform and your criteria in record time.

SMART ANALYTICS

- **Crossing & Impact Report:** Evaluate crossing lengths and critical impacts for any linear corridor.
- **Parcel Report:** Immediately generate detailed parcel reports outlining critical attributes for development projects.
- **Cost Surface Report:** Generate a cost surface to visualize suitability for your energy project.
- **Custom Report:** Pivvot provides custom reporting to meet your unique needs.



PIVVOT PLATFORM FEATURES

- ✓ Collaboration Map
- ✓ Pivvot Data Layers On-Demand
- ✓ Upload Project Sites and Asset Data
- ✓ Draw Points, Project Areas, or Routes
- ✓ Generate Crossing & Impact Reports
- ✓ Load Third-Party Geospatial Data
- ✓ Customized Reporting
- ✓ Data (and Metadata) Download
- ✓ Mobile Field Data Collection Integration

SITING & ROUTING ANALYTICS

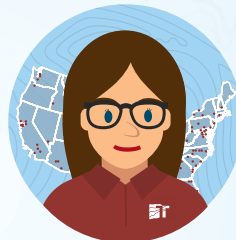
- ✓ Proprietary Expert Algorithm
- ✓ Point-to-Point Route Generation
- ✓ Identify Sites for Utility-Scale Projects
- ✓ Colocation with Existing Assets
- ✓ Download Elevation Profiles
- ✓ Generate Cost Surface
- ✓ Generate Comparison Reports
- ✓ Generate Impact & Crossing Reports



Historical
Data



Geographic Information
System Mapping



Local and National
Experience



Smart Work Plan

MORE THAN

60 YEARS and **700** Environmental and Geotechnical
DATA SOURCES
IN ONE PLACE

Streamlining Site Selection



What do you expect on your next site?

Working with you remotely, our innovative Stage1 platform unlocks powerful, site-specific data and anticipated subsurface conditions allowing you to quickly advance into planning and preliminary designs and budgets without us setting foot on your jobsite.

We're streamlining site selection into three key areas:



GEOTECHNICAL



**SUBSURFACE
ENVIRONMENTAL**



**NATURAL AND
CULTURAL RESOURCES***

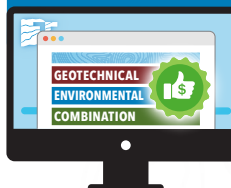
*Includes cultural resources and historic places, wetlands and waters of the U.S., and protected species.

It's affordable and scalable - easily allowing you to compare multiple sites - and available to you. You'll gain an understanding of the potential challenges and risks associated with each site, make more informed site decisions, and reduce the chance of costly construction change orders.

Experience the data!

Stage1 combines 60-plus years of Terracon's historical project data, more than 700 nationwide public and private data sources, and the expertise of Terracon's environmental and geotechnical professionals. Begin your research via our engaging, online experience and then receive your easy-to-read report. We'll provide you with a greater understanding of expected conditions and constructability concerns, an overview of potentially significant issues, and, for your next steps, a Smart Work Plan to proceed. Let Stage1 help you make faster and more informed site selection decisions.

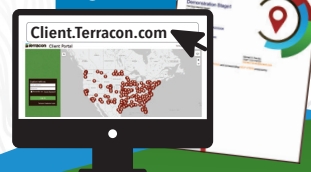
ONLINE ORDERING



FAST DELIVERY



INTERACTIVE PORTAL



AT NO COST

RESEARCH SITES EVEN BEFORE YOU ORDER

via our collaborative
platform

Less invasive,
faster, and more
affordable than
traditional site
research methods

Terracon Stage1 Client Experience: <https://youtu.be/pfDbNoQ9eom>

WHY STAGE1?

Resourceful. What we know can help you. We're drawing upon our more than 10,000 Phase I investigations completed each year and expertise operating the largest exploration fleet in the country. This experience allows you to move faster with the confidence in a team that knows how to interpret potential obstacles and overcome them.

Responsive. Terracon has a proven record of delivering Stage1 on-time. Give us a few days and we'll give you access to decades of historical data.

Reliable. Your dedicated Client Service Specialist will stay in touch during and after you order. Then your local Terracon professional will partner through the next steps of your Smart Work Plan.

SERVICES
available in all
50 states
Locations Nationwide

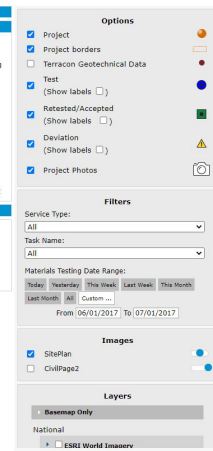
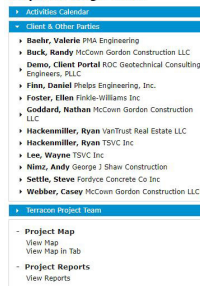
ENR Rankings 2024

- #2 Asbestos and Lead Abatement
- #10 Top 100 Pure Designers
- #18 Top 500 Design Firms
- #44 Top 150 Global Design Firms
- #71 Top 200 Environmental Firms

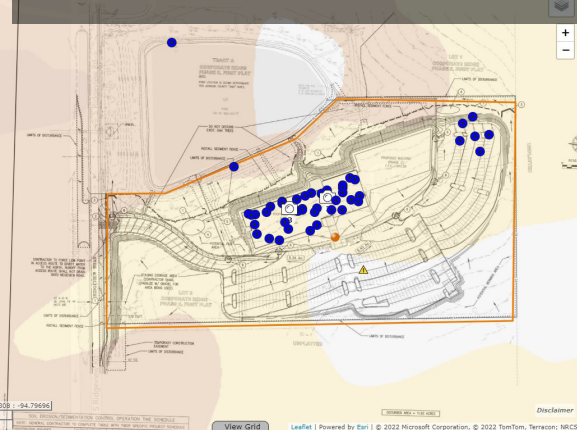




Corporate Ridge - Lot U



EASILY FIND REPORTS THROUGH INTUITIVE FILTERS AND LOCATIONS



Materials Data Delivery

Traditional methods of reporting and accessing results of your project's inspections, testing, and observations are no longer sufficient for today's construction projects. With a large amount of reports generated on a single project, you now have a solution to quickly find and view specific data to make timely, informed decisions for your project.

Terracon offers you the ability to view and interact with your testing data in a new way and is committed to using innovative techniques to deliver quality projects. Construction data is viewed by geographic location in relation to your project drawings as part of our seamless project delivery system.

Advantages to Terracon Compass:

- Mapped Testing Data on Your Dashboard
- Filtering Tools (date, test type, deviations, etc.)
- Intuitive Test Status by Color
- Additional GIS Layers
- Augmented Testing Reports with In-Place Locations
- Quicker Turnaround Time

One of Terracon Compass' greatest strengths is that we curate your projects for your future. Terracon Compass shows your team members an interactive map with locations of past and present projects to navigate geographically; or for those that prefer a tabular format, we have that option too. Either way, as you collaborate with Terracon, your team members will be able to build a library of past projects curated online through a secured login. That means a few years after completion, your team can readily find a final, signed deliverable.

How It Works:

We overlay your project drawings into an accessible GIS map. Our field professionals will locate where they are standing on the plan through their mobile devices. When performing a test or observation, they simply drop a pin where the work is, perform our work, and collect the data. Field professionals complete the data collection through intuitive forms built into the application.

Once complete, the technicians can submit the report from their device in the field which dramatically reduces report turnaround time. After the report has been reviewed and approved it is visible in Terracon Compass.

Imagine seeing all your materials testing data for your project on one screen, located where the work occurred, and with intuitive filters to find what you need. What used to take hours can now be accomplished in minutes using Terracon Compass.

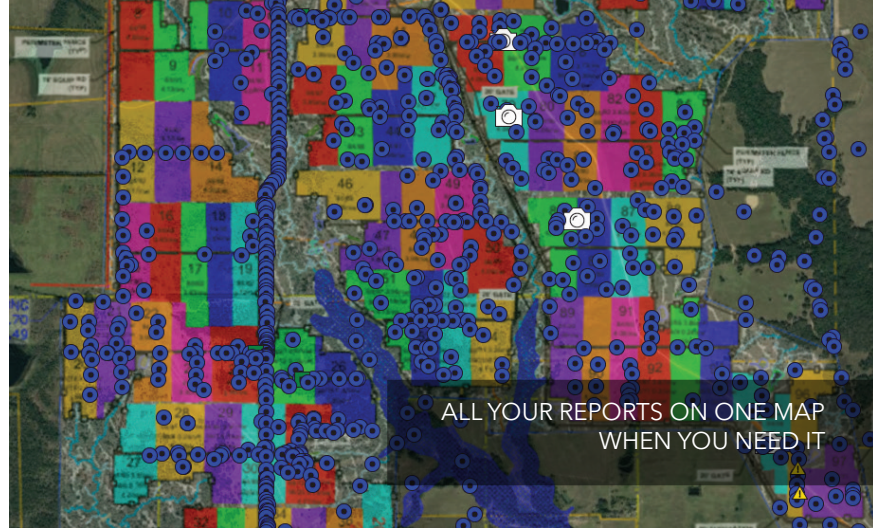
"I've never seen testing reports with such nice attachments depicting sampling locations. Your tech made sure to find me yesterday after every test he performed and reported the results. Good job."

- STEVE SCHLUMBERGER, FIELD MANAGER
FTWOODS CONSTRUCTION SERVICES, INC.



Nationwide
Terracon.com

- Facilities
- Environmental
- Geotechnical
- Materials



Why Terracon?

Resourceful. With our nationwide network of more than 5,000 employee-owners in more than 175 locations, Terracon can initiate services easily and quickly on multiple materials projects, simultaneously.

Responsive. As your partner, you can count on us to proactively develop better ways to provide you information faster than ever before so you can make timely, cost-effective decisions.

Reliable. We deliver consistent quality on every project through our robust, collaborative quality control process. From mobile field data collection to analyzing and reporting results with our proprietary, real-time intelligence and data management platforms, we deliver the high-quality reporting you need, where you need it!

"Terracon was involved from design and also provided testing services through the entire project, which included approximately 75,000 cubic yards of structural embankment along a canal. Terracon displayed a high level of professionalism, knowledge, and promptness."

- LANE MULLENAUX, ASSISTANT SUPERINTENDENT,
PCL CONSTRUCTION, INC.



ENR Rankings 2024

- #2** Asbestos and Lead Abatement
- #10** Top 100 Pure Designers
- #18** Top 500 Design Firms
- #44** Top 150 Global Design Firms
- #71** Top 200 Environmental Firms

Contacts

Sunny Abree
Client Development Manager
D (770) 623-4107
M (678) 577-9517
sunny.abree@terracon.com

Bill Sheffield, PE
Geotechnical Department Manager
D (770) 623-4826
M (770) 235-5440
bill.sheffield@terracon.com



Nationwide
[Terracon.com](https://terracon.com)

- Facilities
- Environmental
- Geotechnical
- Materials